



**India Meteorological Department
(Ministry of Earth Sciences)**

NATIONAL BULLETIN NO. 10 (BOB/05/2023)

TIME OF ISSUE:0915 HOURS IST

DATED: 17.11.2023

FROM: INDIA METEOROLOGICAL DEPARTMENT (FAX NO. 24643965/24699216/24623220)

TO: CONTROL ROOM, NDM, MINISTRY OF HOME AFFAIRS (FAX.NO. 23093750)

CONTROL ROOM NDMA (FAX.NO. 26701729)

CABINET SECRETARIAT (FAX.NO.23012284, 23018638)

PS TO HON'BLE MINISTER FOR S & T AND EARTH SCIENCES (FAX NO.23316745)

SECRETARY, MOES (FAX NO. 24629777)

H.Q. (INTEGRATED DEFENCE STAFF AND CDS) (FAX NO. 23005137/23005147)

DIRECTOR GENERAL, DOORDARSHAN (23385843)

DIRECTOR GENERAL, AIR (23421105, 23421219)

PIB MOES (FAX NO. 23389042)

UNI (FAX NO. 23355841)

D.G. NATIONAL DISASTER RESPONSE FORCE (NDRF) (FAX NO. 26105912, 2436 3260)

DIRECTOR, PUNCTUALITY, INDIAN RAILWAYS (FAX NO. 23388503)

CHIEF SECRETARY, ODISHA (FAX NO. 0674-2536660)

CHIEF SECRETARY, WEST BENGAL (FAX NO. 033-22144328)

CHIEF SECRETARY, ANDHRA PRADESH (FAX NO. 0863-2441029, 08645-246600)

CHIEF SECRETARY, TAMIL NADU (FAX NO 044-25672304)

CHIEF SECRETARY, PUDUCHERRY (FAX NO 0413-2334145)

ADMINISTRATOR, ANDAMAN & NICOBAR ISLANDS (FAX NO. 03192- 232656)

CHIEF SECRETARY, GOVT. OF TRIPURA (FAX NO. 0381-2414013, 2413200)

CHIEF SECRETARY, GOVT. OF MIZORAM (FAX NO. 0389-2322745, 2320588)

CHIEF SECRETARY, GOVT. OF MANIPUR (FAX NO. 0385-2452629)

CHIEF SECRETARY, GOVT. OF NAGALAND (FAX NO. 0370-2270057)

CHIEF SECRETARY, GOVT. OF ASSAM (FAX NO. 0361-2260900)

CHIEF SECRETARY, GOVT. OF MEGHALAYA (FAX NO. 0364-2225978)

Sub: Deep Depression intensified into a Cyclonic Storm “Midhili” (pronounced as “Midhili”) over Northwest Bay of Bengal

The Deep Depression over Northwest Bay of Bengal moved north-northeastwards with a speed of 20 kmph during past 6 hours, intensified into a cyclonic storm “**Midhili**” (pronounced as “**Midhili**”) and lay centered at 0530 hours IST of today, the 17th November over Northwest Bay of Bengal near latitude 20.1°N and longitude 88.5°E, about 190 km east of Paradip (Odisha), 200 km south-southeast of Digha (West Bengal) and 220 km southwest of Khepupara (Bangladesh).

It is likely to continue to move north-northeastwards and cross Bangladesh coast close to Khepupara with wind speed of 60-70 kmph gusting to 80 kmph during night of 17th and early hours of 18th November, 2023.

Forecast track and intensity are given below:

Date/Time (IST)	Position (Lat. °N/ long. °E)	Maximum sustained surface wind speed (Kmph)	Category of cyclonic disturbance
17.11.23/0530	20.1/88.5	60-70 kmph gusting to 80 kmph	Cyclonic Storm
17.11.23/1130	20.7/89.0	70-80 kmph gusting to 90 kmph	Cyclonic Storm
17.11.23/1730	21.3/89.5	70-80 kmph gusting to 90 kmph	Cyclonic Storm
17.11.23/2330	22.0/90.0	60-70 kmph gusting to 80 kmph	Cyclonic Storm
18.11.23/0530	22.6/90.4	50-60 kmph gusting to 70 kmph	Deep Depression
18.11.23/1730	23.7/90.8	35-45 kmph gusting to 55 kmph	Depression

Warnings:

(i) Rainfall Warning (graphics enclosed):

- Light to moderate rainfall at many places with isolated heavy rainfall is likely over coastal districts of West Bengal till evening of 17th November.
- Light to moderate rainfall at most places with isolated heavy rainfall is likely over Nagaland, Manipur, Mizoram & Tripura on 17th & 18th November with very heavy rainfall at isolated places over Mizoram & Tripura on 17th November.
- Light to moderate rainfall at many places with isolated heavy rainfall is likely over south Assam and east Meghalaya on 17th & 18th November.

(ii) Wind warning (graphics enclosed):

- **Gale wind** speed reaching **60-70 kmph gusting to 80 kmph** is prevailing over Northwest Bay of Bengal and is likely to increase gradually becoming **Gale wind** speed reaching **70-80 kmph gusting to 90 kmph** over North Bay of Bengal from forenoon till evening of 17th November. It would decrease gradually to become **60-70 kmph gusting to 80 kmph** over the North Bay of Bengal on 18th morning and decrease thereafter to become Squally wind speed reaching **40-50 kmph gusting to 60 kmph** by noon of 18th November and decrease thereafter.
- **Squally wind** speed reaching **40-50 kmph gusting to 60 kmph** is likely over adjoining central Bay of Bengal till 17th evening and decrease thereafter.
- **Along & off West Bengal Coast: Squally wind speed reaching 40-50 kmph gusting to 60 kmph** is prevailing. It is likely to increase gradually becoming **50-60 kmph gusting to 70 kmph** from 17th morning till 18th morning and decrease thereafter.
- **Along & off Bangladesh Coast: Squally wind speed reaching 50-60 kmph gusting to 70 kmph** is prevailing and likely to increase becoming **60-70 kmph gusting to 80 kmph** from 17th evening till 18th morning and decrease thereafter.
- **Strong wind** speed reaching **30-40 kmph gusting to 50 kmph** is likely over Tripura, Mizoram, Manipur and south Assam on 18th November.

(iii) Sea Condition:

- **Very rough to high** sea condition is prevailing over North Bay of Bengal and Along & off Bangladesh coast and likely to continue till morning of 18th November.
- **Rough to very rough** sea condition is likely along & off West Bengal coast till 18th November morning.
- **Rough** sea condition is likely over adjoining central Bay of Bengal till evening of 17th November.

(iv) Fishermen Warning:

Fishermen are advised not to venture into

- North Bay of Bengal on 17th & 18th November

- Along & off West Bengal and Bangladesh coasts on 17th & 18th November
- Adjoining central Bay of Bengal till 17th evening.

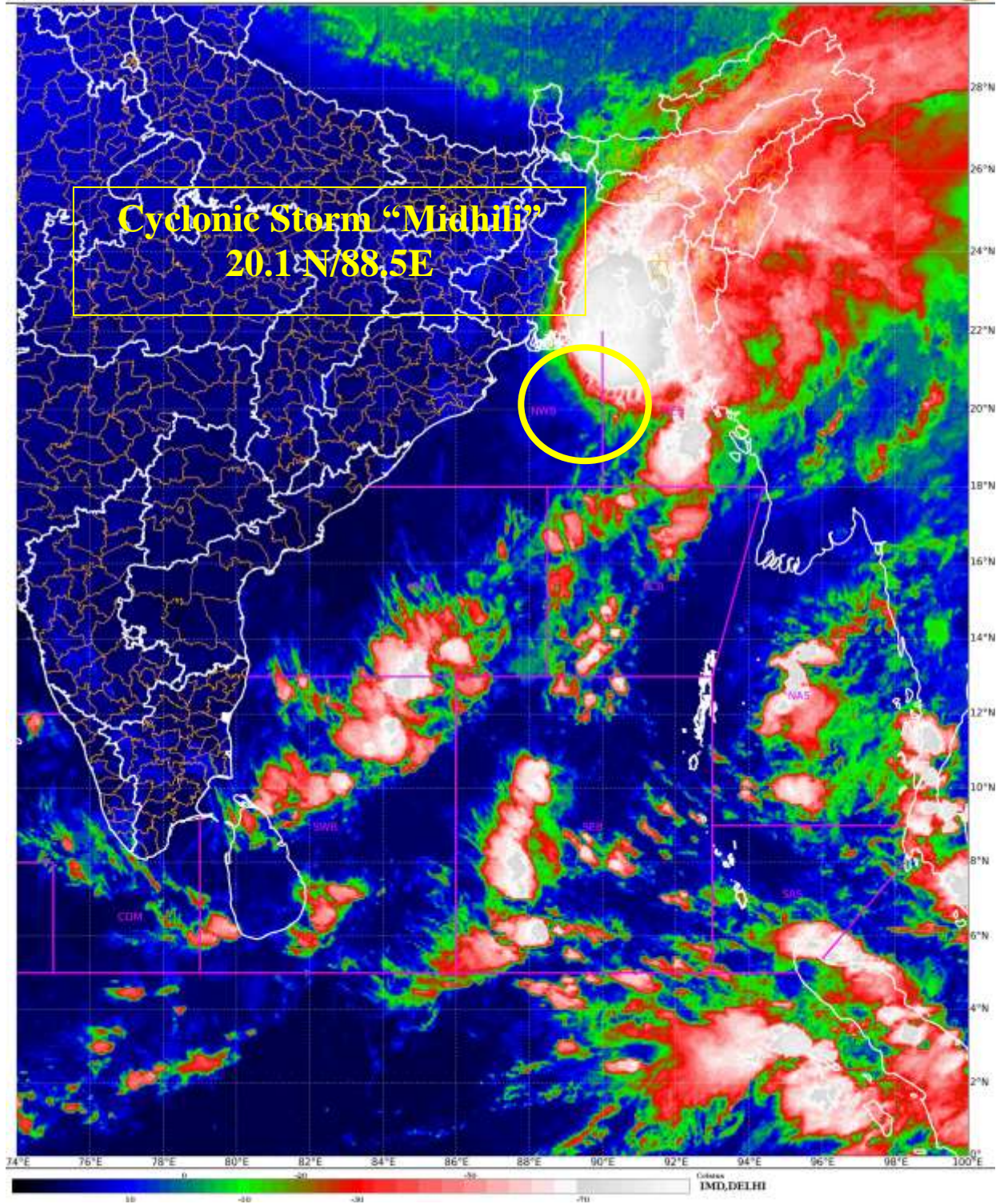
(v) Damage Expected & Action Suggested for coastal areas of Odisha & West Bengal:

- Damage to thatched huts and loose/unsecured structures..
- Minor damage to power and communication lines due to breaking of branches.
- Major damage to Kutcha and minor damage to Pucca roads.
- Some damage to paddy crops, banana, papaya & drumstick trees and orchards.
- Sea water inundation in low lying areas after erosion of Kutcha embankments.
- Partial Damage to standing crops in coastal areas of west Bengal.
- Damages to Kutcha embankments.

The system is under continuous surveillance and the next message will be issued at 1130 hours IST of today, the 17th November, 2023.

**(Ananda Kumar Das)
Scientist F, Cyclone Warning, New Delhi**

Copy to:ACWC Chennai/ ACWC Kolkata/CWC Bhubaneswar/CWC Vishakhapatnam/MC Amravati/ RMC Guwahati/MC Agartala/MC Mizoram/MC Manipur/MC Nagaland/MC Shillong





OBSERVED AND FORECAST TRACK AND INTENSITY ALONGWITH CONE OF UNCERTAINTY IN ASSOCIATION WITH CYCLONIC STORM MIDHILI OVER NORTHWEST BAY OF BENGAL BASED ON 0000 UTC (0530 HRS IST) OF 17TH



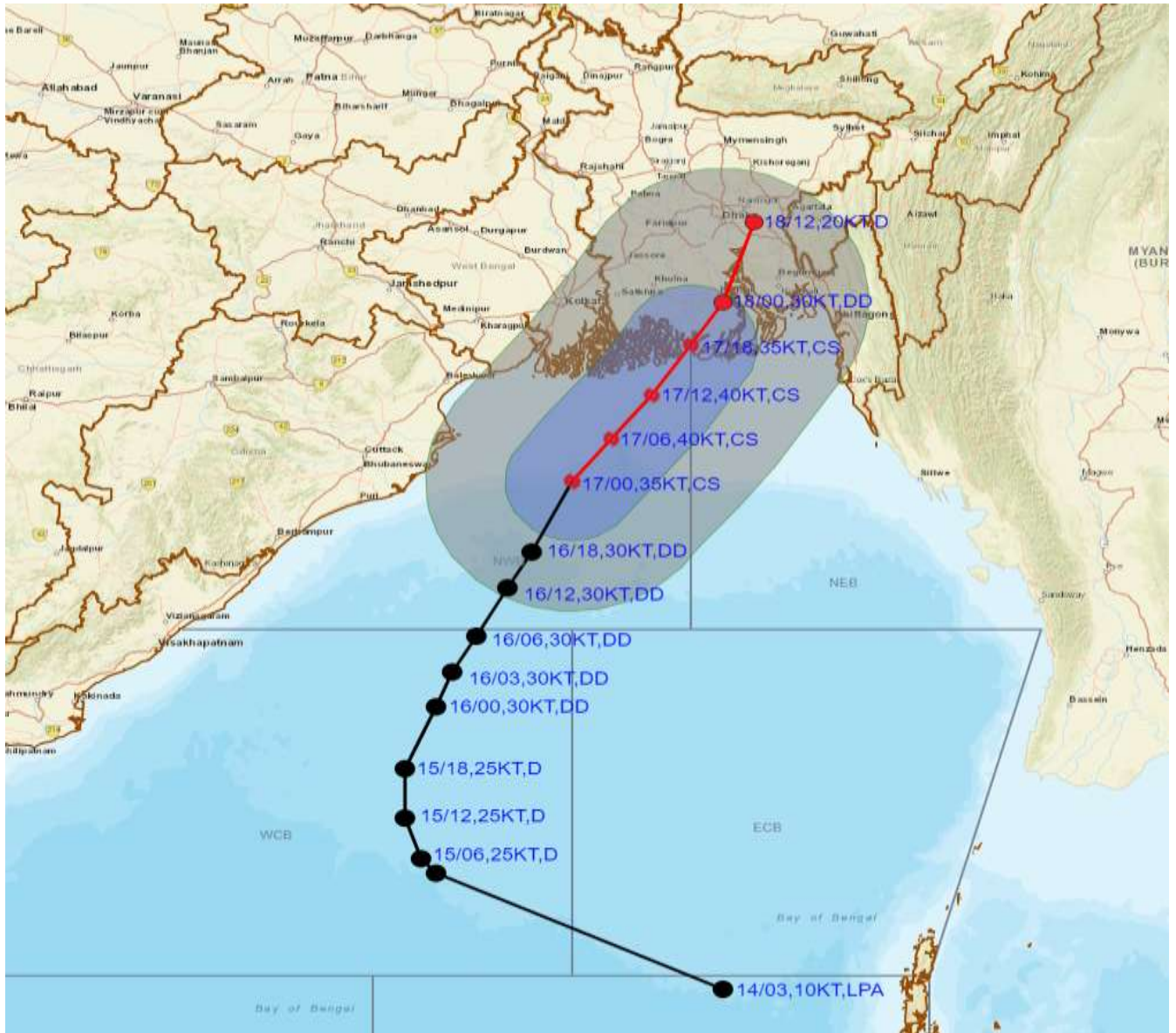
DATE/TIME IN UTC
 IST=UTC + 0530
 L: LOW PRESSURE AREA
 WML: WELL MARKED LOW PRESSURE AREA
 D: DEPRESSION (17-27 KT)
 DD: DEEP DEPRESSION (28-33 KT)
 CS: CYCLONIC STORM (34-47 KT)
 SCS: SEVERE CYCLONIC STORM (48-63KT)
 VSCS: VERY SEVERE CYCLONIC STORM (64-89 KT)
 ESCS: EXTREMELY SEVERE CYCLONIC STORM (90-119 KT)
 SuCS: SUPER CYCLONIC STORM (\geq 120 KT)

- LESS THAN 34 KT
- 34-47 KT
- \geq 48 KT
- OBSERVED TRACK
- FORECAST TRACK
- ▲ CONE OF UNCERTAINTY

Forecast	DISTANCE (KM) AND DIRECTION FROM STATIONS			
Date and Time (UTC)	PARADIP (CWR)	DIGHA	KHEPUPARA	CHITTAGONG (AMBAGAN)
17.11.23/0000	270, SSE	410, S	540, SSW	680 SW
18.11.23/0000	470, NE	320, ENE	80, NNE	150, W
18.11.23/1200	570, NE	410, NE	200, NNE	180, NW



OBSERVED AND FORECAST TRACK AND INTENSITY ALONG WITH QUADRANT WIND DISTRIBUTION IN ASSOCIATION WITH CYCLONIC STORM MIDHILI NORTHWEST BAY OF BENGAL BASED ON 0000 UTC (0530 HRS IST) OF 17TH NOVEMBER 2023.



DATE/TIME IN UTC
IST=UTC + 0530

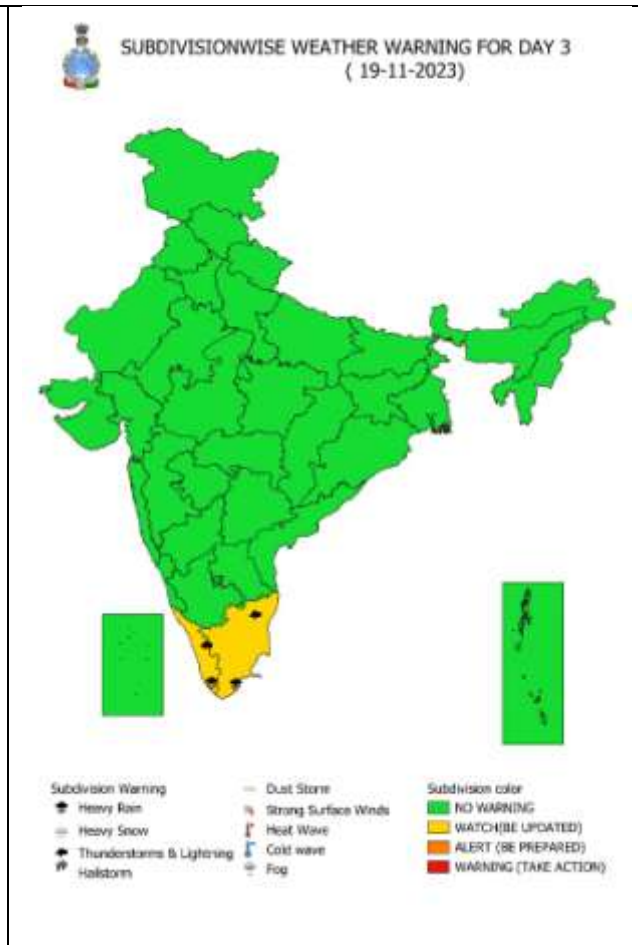
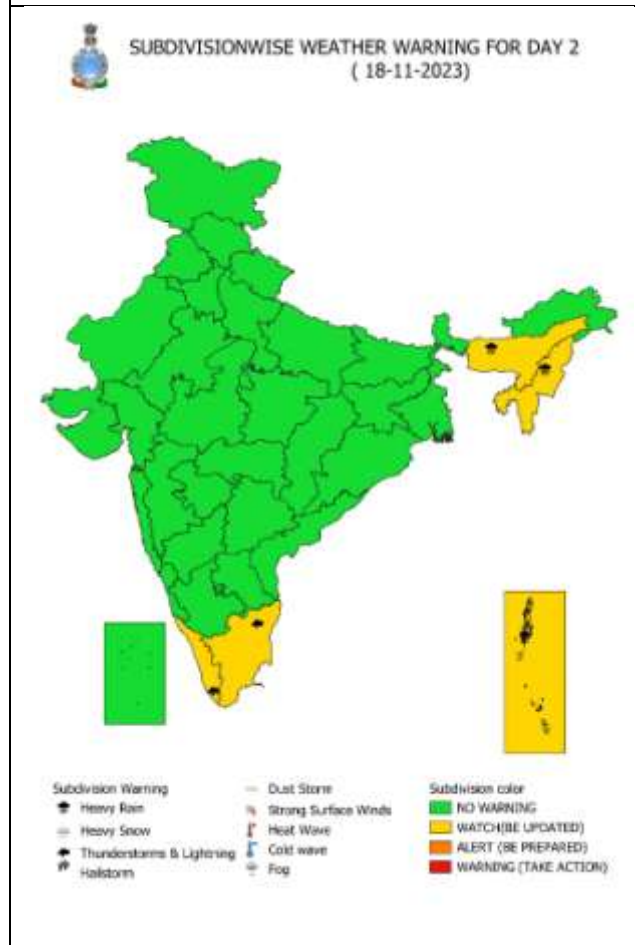
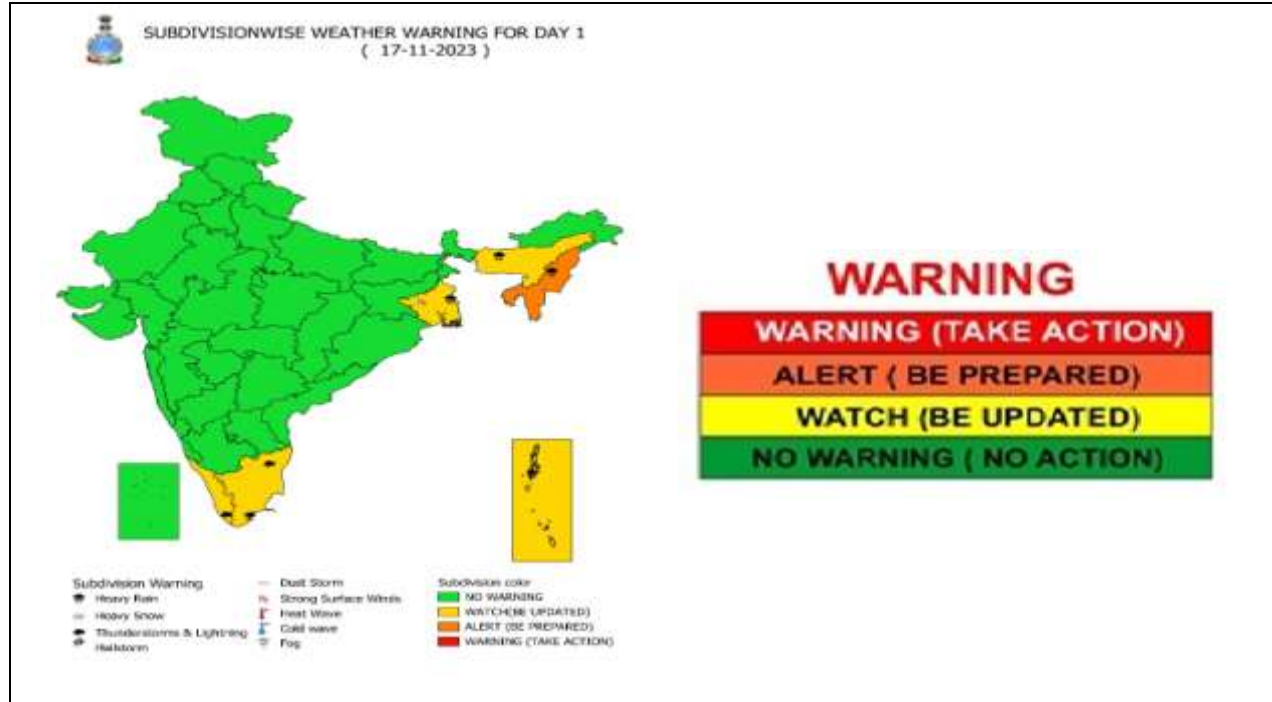
L: LOW PRESSURE AREA
WML: WELL MARKED LOW PRESSURE AREA
D: DEPRESSION (17-27 KT)
DD: DEEP DEPRESSION (28-33 KT)
CS: CYCLONIC STORM (34-47 KT)
SCS: SEVERE CYCLONIC STORM (48-63KT)
VSCS: VERY SEVERE CYCLONIC STORM (64-89 KT)
ESCS: EXTREMELY SEVERE CYCLONIC STORM (90-119 KT)
SuCS: SUPER CYCLONIC STORM (\geq 120 KT)

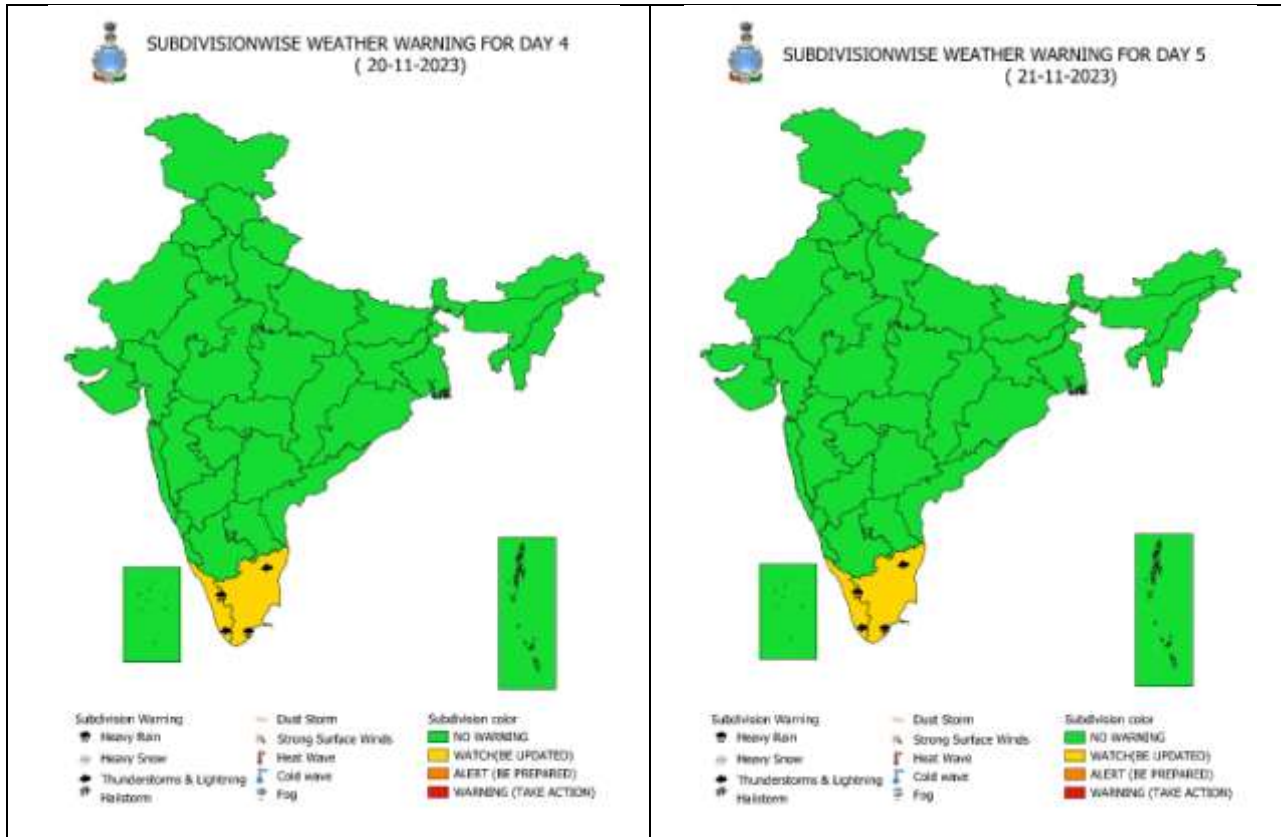
● LESS THAN 34 KT
○ 34-47 KT
● \geq 48 KT
— OBSERVED TRACK
— FORECAST TRACK
— CONE OF UNCERTAINTY
AREA OF MAXIMUM SUSTAINED WIND SPEED:
— 28-33 KT (52-61 KMPH)
— 34-49 KT (62-91 KMPH)
— 50-63 KT (92-117 KMPH)
— \geq 64 KT (\geq 118 KMPH)

IMPACT OVER THE SEA

MSW (knot/kmph)	Impact	Action
28-33 (52-61)	Very rough seas	Total suspension of fishing operations
34-49 (62-91)	High to very high seas	Total suspension of fishing operations
50-63 (92-117)	Very high seas	Total suspension of fishing operations
\geq 64 (\geq 118)	Phenomenal	Total suspension of fishing operations

WEATHER WARNING GRAPHICS





Fishermen warning graphics

Day 1: 17.11.2023/05:30AM to 18.11.2023/05:30AM



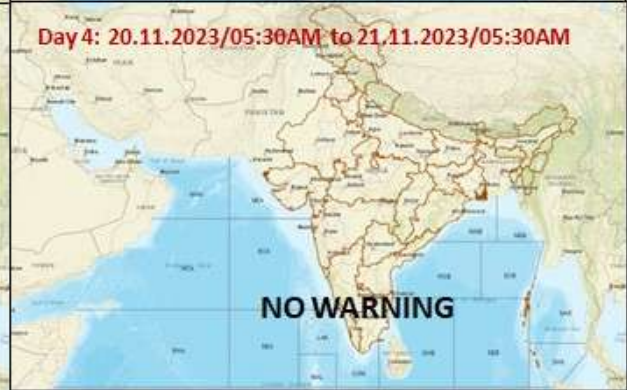
Day 2: 18.11.2023/05:30AM to 19.11.2023/05:30AM



Day 3: 19.11.2023/05:30AM to 20.11.2023/05:30AM



Day 4: 20.11.2023/05:30AM to 21.11.2023/05:30AM



Squally WX with wind speed 40-45 kmph gusting to 55 kmph

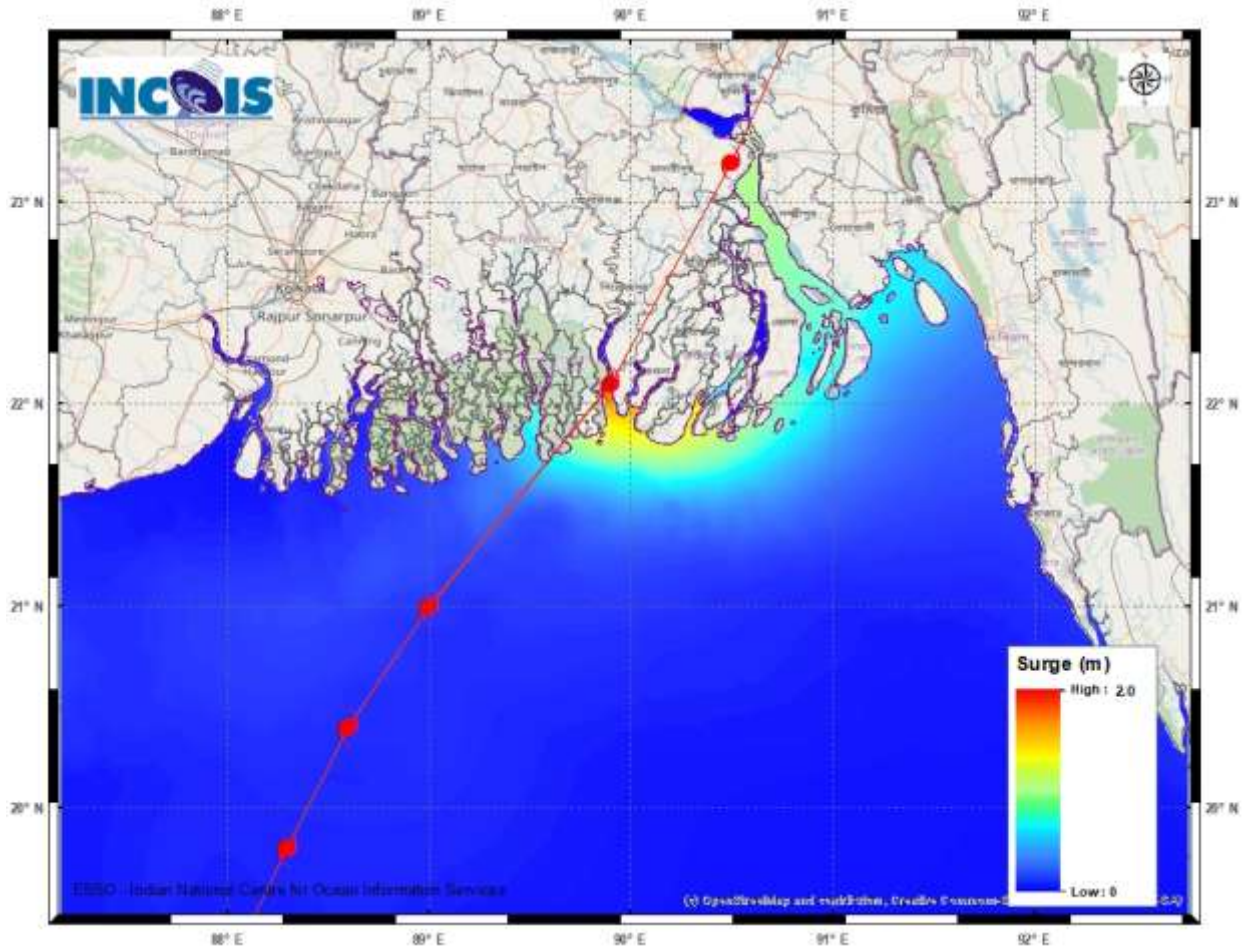
Squally WX with wind speed 45-55 kmph gusting to 65 kmph

Squally wind with speed 50-60 kmph gusting to 70 kmph

CS with Gale wind speed 60-90 kmph gusting to 110 kmph

Fishermen are advised not to venture into the marked areas.

STORM SURGE GUIDANCE

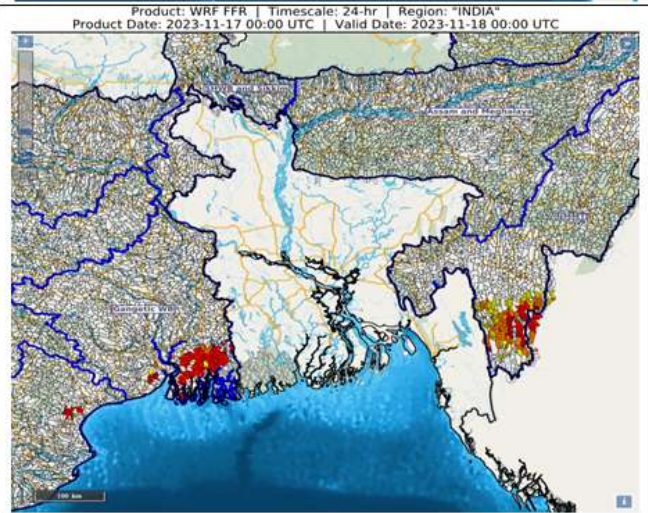


FLASH FLOOD GUIDANCE

24 hours Outlook for the Flash Flood Risk (FFR) till 0530 IST of 18-11-2023 :

Moderate flash flood risk likely over few watersheds & neighbourhoods of NMMT and Gangetic West Bengal Met Sub-divisions during next 24 hours.

Surface runoff/ Inundation may occur at some fully saturated soils & low-lying areas over AoC as shown in map due to expected rainfall occurrence in next 24 hours.



Flash Flood Risk

 High Risk (Take Action)

 Moderate Risk (Be Prepared)

 Low Risk (Be Updated)